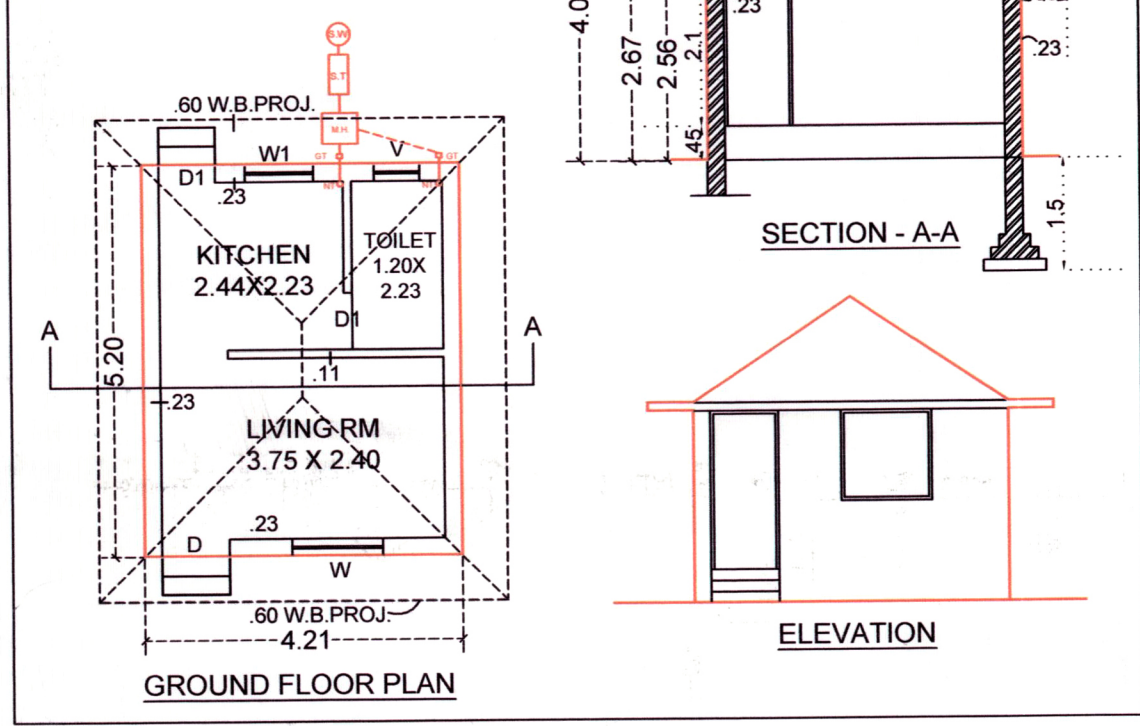


**BUILT UP AREA CALCULATION**  
GR.FL. = 4.21 X 5.20 = 21.89 SMT  
B.A. & F.S.I. AREA TABLE  
GR.FL. = 21.89 SMT



**BUILT UP & F.S.I. AREA TABLE :**

BLOCK	FLOOR	B.A. IN SMT	NO OF BLOCKS	TOTAL AREA IN SQ.MTRS	TOTAL UNITS
A	GROUND	21.89	90	1970.10	90
TOTAL			90	1970.10	90

**COMMON PLOT AREA CALCULATION**

C.P.NO.1	73.30 X (25.09+5.95)/2 = 1137.62			
	8.37 x 6.35 x 1/2 = 26.57	-3.87	1160.32	
C.P.NO.2	25.66 x 28.36 = 727.72	-7.74	956.55	
	27.81 X (7.68+9.89)/2 = 244.31	-7.74		
C.P.NO.3	20.54 X 22.83		468.93	
C.P.NO.4	48.15 X (21.18+23.87)/2	-4.35	1080.23	
			3666.03	

**CERTIFICATE**  
CERTIFIED THAT THE PLOT UNDER REFERENCE WAS SURVEYED BY ME ON ..... AND THE DIMENSION OF SIDES ETC OF PLOT STATE ON PLAN ARE AS INSEUR ON SITE AND THE AREA SO WORKED OUT TALLIES WITH THE AREA STATED IN DOCUMENT OF OWNERSHIP T.P. RECORD.  
ARCHITECT / ENGINEER SIGNATURE  
**AREA GOING I ROAD CALCULATION**  
31.26 X 10.75 X 1/2 = 168.00

P. NO.	CALCULATION	TOTAL AREA	PERM. B. AREA @ 40% OF P. AREA	PROPOSED B. UP AREA	BALA B. UP AREA	PERM. F. S. I. @ 12 OF PLOT AREA	PROPOSED F. S. I. AREA	BALA F. S. I. AREA
1	25.66 X 19.54	501.40	200.56	21.89	178.67	601.68	21.89	579.79
2/A	25.66 X 13.03	334.35	133.74	21.89	111.85	401.22	21.89	379.33
2/B	25.66 X 13.03	334.35	133.74	21.89	111.85	401.22	21.89	379.33
3	25.66 X 13.03	334.35	133.74	21.89	111.85	401.22	21.89	379.33
4/A	25.66 X 13.03	334.35	133.74	21.89	111.85	401.22	21.89	379.33
4/B	25.66 X 13.03	334.35	133.74	21.89	111.85	401.22	21.89	379.33
5	25.66 X 13.03	334.35	133.74	21.89	111.85	401.22	21.89	379.33
6/A	25.66 X 13.03	334.35	133.74	21.89	111.85	401.22	21.89	379.33
6/B	25.66 X 13.03	334.35	133.74	21.89	111.85	401.22	21.89	379.33
7	25.66 X 13.03	334.35	133.74	21.89	111.85	401.22	21.89	379.33
8	32.23 X (14.12+15.52)/2	435.12	174.05	21.89	162.16	597.27	21.89	575.38
9	31.62 X (13.57+15.00)/2	447.34	178.94	21.89	167.05	615.29	21.89	593.40
10/A	25.66 X 12.61	323.57	129.43	21.89	107.54	388.28	21.89	366.39
10/B	25.66 X 12.61	323.57	129.43	21.89	107.54	388.28	21.89	366.39
10/C	25.66 X 12.61	323.57	129.43	21.89	107.54	388.28	21.89	366.39
11/A	25.66 X 13.03	334.35	133.74	21.89	111.85	401.22	21.89	379.33
11/B	25.66 X 13.03	334.35	133.74	21.89	111.85	401.22	21.89	379.33
12	25.66 X 13.03	334.35	133.74	21.89	111.85	401.22	21.89	379.33
13/A	25.66 X 13.03	334.35	133.74	21.89	111.85	401.22	21.89	379.33
13/B	25.66 X 13.03	334.35	133.74	21.89	111.85	401.22	21.89	379.33
14	25.66 X 13.03	334.35	133.74	21.89	111.85	401.22	21.89	379.33
15/A	25.66 X 13.03	334.35	133.74	21.89	111.85	401.22	21.89	379.33
15/B	25.66 X 13.03	334.35	133.74	21.89	111.85	401.22	21.89	379.33
16	25.66 X 16.03	411.33	164.53	21.89	142.64	493.60	21.89	471.71
17	25.66 X 16.54	416.68	166.67	21.89	144.78	500.02	21.89	478.13
18	20.54 X 16.29	334.60	133.84	21.89	111.95	401.52	21.89	379.63
19	20.54 X 16.29	334.60	133.84	21.89	111.95	401.52	21.89	379.63
20/A	20.54 X 10.86	223.06	89.22	21.89	67.33	267.67	21.89	245.78
20/B	20.54 X 10.86	223.06	89.22	21.89	67.33	267.67	21.89	245.78
21	20.54 X 10.86	223.06	89.22	21.89	67.33	267.67	21.89	245.78
22	20.54 X 16.29	334.60	133.84	21.89	111.95	401.52	21.89	379.63
23	20.54 X 16.29	334.60	133.84	21.89	111.95	401.52	21.89	379.63
24	20.54 X 16.29	334.60	133.84	21.89	111.95	401.52	21.89	379.63
25	20.54 X 16.29	334.60	133.84	21.89	111.95	401.52	21.89	379.63
26	20.54 X 9.75	200.27	80.11	21.89	58.22	240.56	21.89	218.67
27	20.54 X 16.29	334.60	133.84	21.89	111.95	401.52	21.89	379.63
28	20.54 X 16.29	334.60	133.84	21.89	111.95	401.52	21.89	379.63
29	23.20 X (9.58+10.76)/2	231.59	92.64	21.89	70.75	277.91	21.89	256.02
30	22.96 X (7.92+9.19)/2	192.07	76.83	21.89	54.94	230.48	21.89	208.59
31	20.54 X 16.29	334.60	133.84	21.89	111.95	401.52	21.89	379.63
32	20.54 X 16.29	334.60	133.84	21.89	111.95	401.52	21.89	379.63
33	20.54 X 16.29	334.60	133.84	21.89	111.95	401.52	21.89	379.63
34	20.54 X 16.29	334.60	133.84	21.89	111.95	401.52	21.89	379.63
35	20.54 X 16.29	334.60	133.84	21.89	111.95	401.52	21.89	379.63
36	20.54 X 16.29	334.60	133.84	21.89	111.95	401.52	21.89	379.63
37	20.54 X 16.29	334.60	133.84	21.89	111.95	401.52	21.89	379.63
38	20.54 X 16.29	334.60	133.84	21.89	111.95	401.52	21.89	379.63
39	20.54 X 16.29	334.60	133.84	21.89	111.95	401.52	21.89	379.63
40	20.54 X 16.29	334.60	133.84	21.89	111.95	401.52	21.89	379.63
41	20.54 X 16.29	334.60	133.84	21.89	111.95	401.52	21.89	379.63
42	13.72 X 12.21	167.52	67.01	21.89	45.12	201.02	21.89	179.13
43	13.72 X 12.21	167.52	67.01	21.89	45.12	201.02	21.89	179.13
44	13.72 X 12.21	167.52	67.01	21.89	45.12	201.02	21.89	179.13
45	13.72 X 12.21	167.52	67.01	21.89	45.12	201.02	21.89	179.13
46	13.72 X 12.21	167.52	67.01	21.89	45.12	201.02	21.89	179.13
47	13.72 X 12.21	167.52	67.01	21.89	45.12	201.02	21.89	179.13
48	13.72 X 12.21	167.52	67.01	21.89	45.12	201.02	21.89	179.13
49	13.72 X 12.21	167.52	67.01	21.89	45.12	201.02	21.89	179.13
50	13.72 X 11.16	153.12	61.25	21.89	39.36	183.74	21.89	161.85
51	13.72 X 11.16	153.12	61.25	21.89	39.36	183.74	21.89	161.85
52	13.72 X 11.16	153.12	61.25	21.89	39.36	183.74	21.89	161.85
53	13.72 X 11.16	153.12	61.25	21.89	39.36	183.74	21.89	161.85
54	13.72 X 11.16	153.12	61.25	21.89	39.36	183.74	21.89	161.85
55	13.72 X 11.16	153.12	61.25	21.89	39.36	183.74	21.89	161.85
56	13.72 X 11.16	153.12	61.25	21.89	39.36	183.74	21.89	161.85
57	17.73 X (8.69+9.42)/2	156.20	62.48	21.89	40.59	187.44	21.89	165.55
58	19.21 X (8.29+10.60)/2	177.09	70.84	21.89	48.95	212.51	21.89	190.62
59	18.58 X (9.03+9.52)/2	172.33	68.93	21.89	47.04	206.80	21.89	184.91
60	19.93 X (8.71+10.33)/2	184.02	73.61	21.89	51.72	220.82	21.89	198.93
61	18.45 X (8.17+9.17)/2	159.96	63.98	21.89	42.09	191.95	21.89	170.06
62	11.50 X 13.72	157.78	63.11	21.89	41.22	189.34	21.89	167.45
63	11.50 X 13.72	157.78	63.11	21.89	41.22	189.34	21.89	167.45
64	11.00 X 15.23	167.52	67.01	21.89	45.12	201.02	21.89	179.13
65	11.00 X 15.23	167.52	67.01	21.89	45.12	201.02	21.89	179.13
66	18.93 X (9.04+7.83)/2	159.67	63.87	21.89	41.98	191.60	21.89	169.71
67	18.36 X (8.32+9.12)/2	160.09	64.04	21.89	42.15	192.11	21.89	170.22
68	13.71 X 12.21	167.52	67.01	21.89	45.12	201.02	21.89	179.13
69	13.71 X 12.21	167.52	67.01	21.89	45.12	201.02	21.89	179.13
70	17.48 X (7.89+8.74)/2	145.35	58.14	21.89	36.25	174.42	21.89	152.53
71	18.27 X (8.04+9.06)/2	156.21	62.48	21.89	40.59	187.45	21.89	165.56
72	12.21 X 13.72	167.52	67.01	21.89	45.12	201.02	21.89	179.13
73	25.18 X (10.94+12.49)/2	233.29	93.32	21.89	71.43	295.66	21.89	280.66
74	24.19 X (9.19+10.40)/2	221.46	88.58	21.89	66.69	265.75	21.89	243.86
75	23.17 X (8.79+9.30)/2	209.57	83.83	21.89	61.94	251.48	21.89	229.59
76	22.16 X (8.66+9.19)/2	197.78	79.11	21.89	57.22	237.34	21.89	215.45
77	21.17 X (8.51+9.07)/2	178.34	71.34	21.89	49.45	214.01	21.89	192.12
78	22.52 X (10.99+12.49)/2	236.53	94.61	21.89	73.02	307.84	21.89	285.95
79	27.25 X (12.78+14.90)/2	295.53	118.21	21.89	96.32	354.64	21.89	332.75
80	23.84 X (11.46+8.85)/2	242.10	96.84	21.89	74.86	290.52	21.89	268.63
81	14.34 X 17.58	251.67	100.67	21.89	75.85	270.10	21.89	248.21
82	36.85 X (15.56+12.97)/2	525.67	210.27	21.89	188.38	630.80	21.89	609.91
TOTAL		23772.64	9509.06	7538.96	7538.96	28527.17		26557.07

**REVISED LAY OUT PLAN OF SHOWING**  
RESI. (SUB-PLOTTING) OF SUR NO. 198,  
AT:- VALINDA, TA:- DHANDHUKA,  
DIST:- AHMEDABAD.

SCALE:- 1CM = 5MT USE:- RESI.

**AREA TABLE :-**

IN SQ.MT.	IN SQ.MT.
NET AREA OF B.NO.:- 198	36827.00
AREA GOING IN ROAD	168.00
NET PLOT AREA FOR N.A.	36659.00
REQ. COMMON PLOT AREA @ 10%	3665.90
PROVI. COMMON PLOT AREA	3666.03
TOTAL SUB PLOT AREA 1 TO 82	23772.64
INTERNAL ROAD AREA	9220.33
TOTAL PLOT AREA	36827.00
PROP. BUILT UP AREA ON GR.FL.+(CLUB HOUSE)	2127.76

**COLOUR NOTES:-**  
REVI.WORK: F.P. BOUNDARY  
ROAD: ROAD

COMMON PLOT-4 AREA = 1080.23 SQ. MT.  
PERM. B. AREA @ 15% OF COM. PLOT AREA ON GR.FLR.  
1080.23 X 0.15 = 162.03 SQ. MT.  
PROP. B. AREA IN COMMON PLOT AREA  
(1) COMMUNITY ROOM + GYMNASIUM = 157.66 SQ. MT.  
BALANCE BUILT UP AREA ON COMMON PLOT = 4.37 SQ. MT.

**AREA CALCULATION**  
(FOR 4.50 MT. CURVATURE)  
AREA = 3.14 X R<sup>2</sup> / 4  
= 3.14 X 4.50 X 4.50 / 4  
= 15.90 M<sup>2</sup>  
TOTAL AREA = 4.50 X 4.50 = 20.25 M<sup>2</sup>  
NET AREA IN ROAD = 20.25 - 15.90 = 4.35 M<sup>2</sup>

**AREA CALCULATION**  
(FOR 6.00 MT. CURVATURE)  
AREA = 3.14 X R<sup>2</sup> / 4  
= 3.14 X 6.00 X 6.00 / 4  
= 28.26 M<sup>2</sup>  
TOTAL AREA = 6.00 X 6.00 = 36.00 M<sup>2</sup>  
NET AREA IN ROAD = 36.00 - 28.26 = 7.74 M<sup>2</sup>

*Signature*  
DHIRUBHAI KANUBHAI PATEL

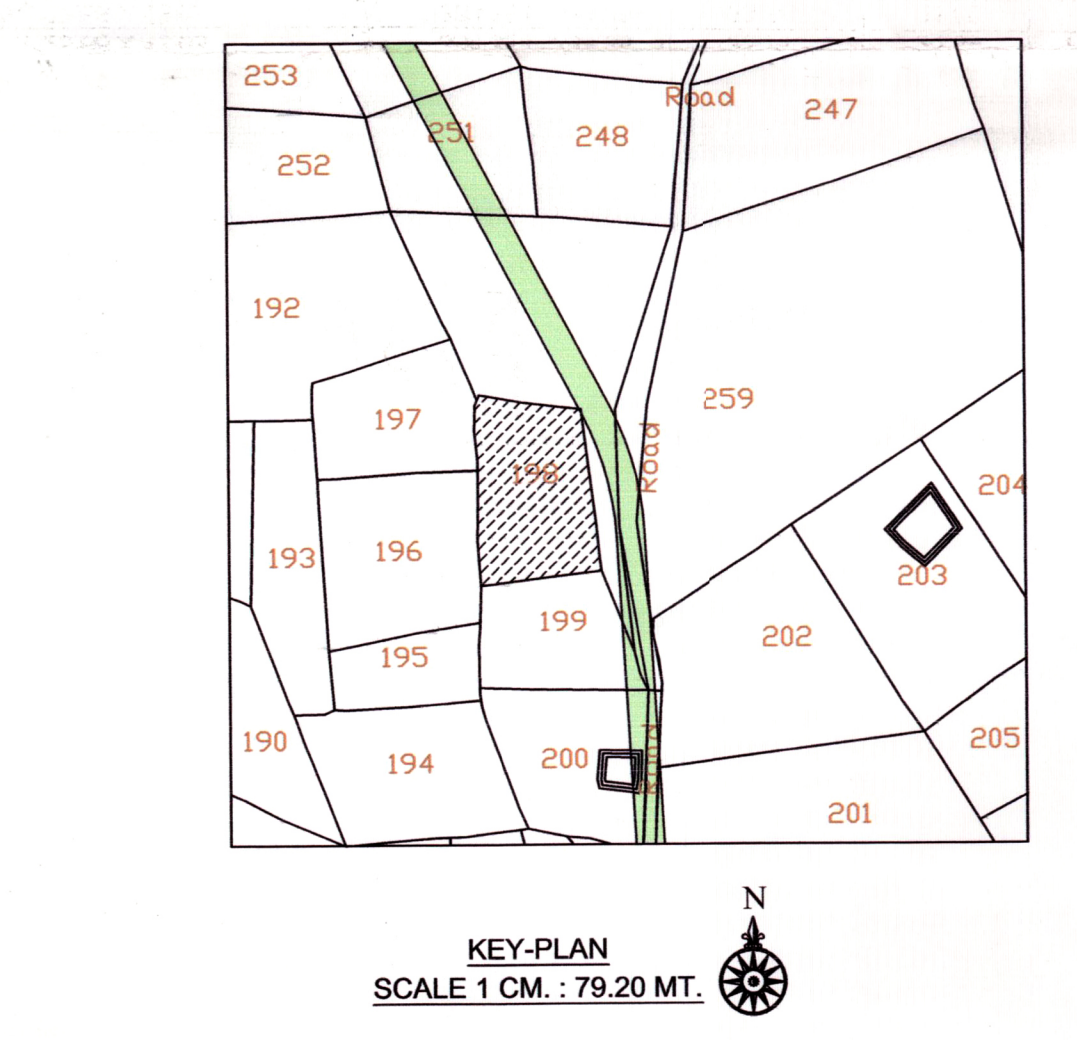
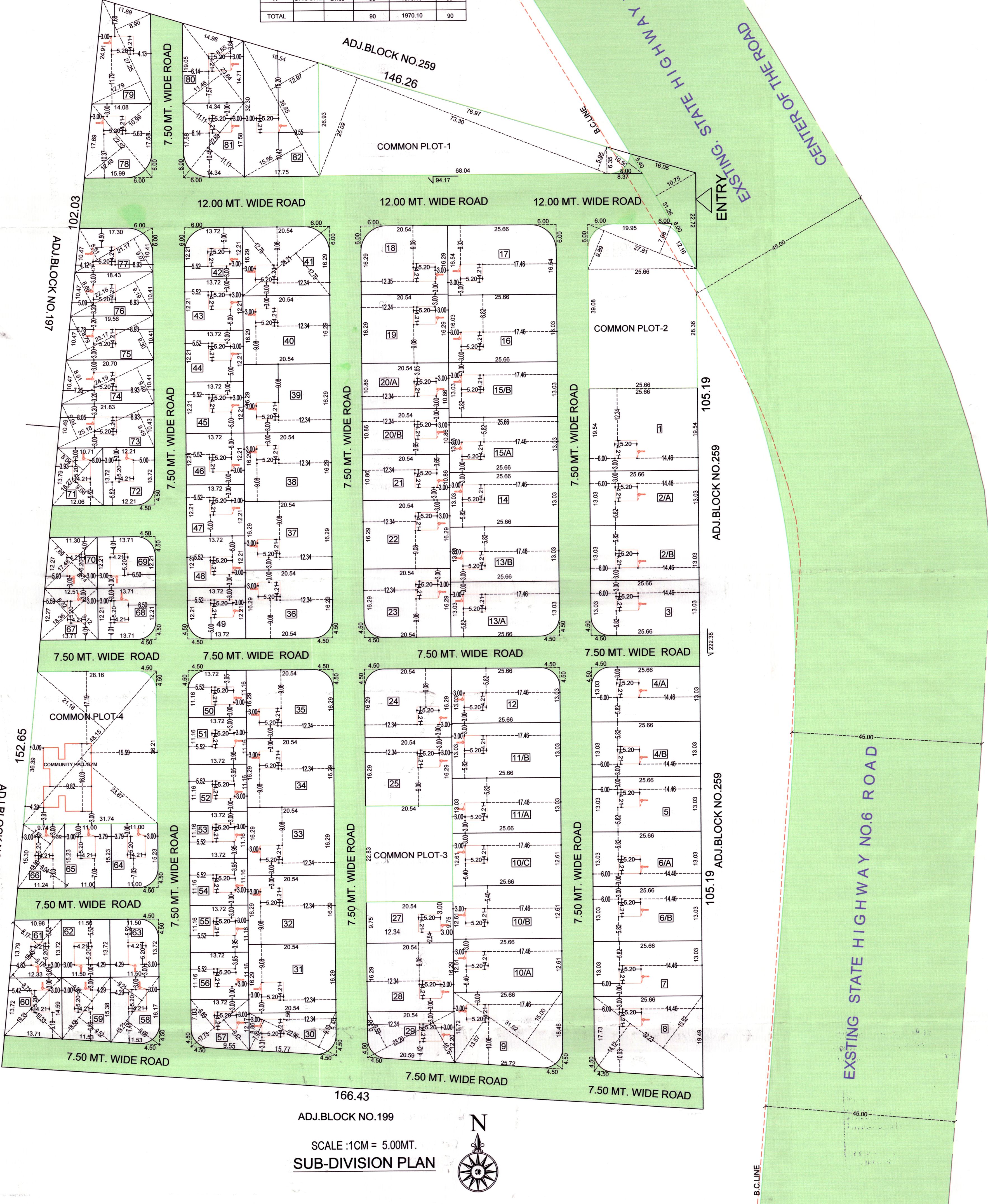
*Signature*  
NAROTAM BHAI MAKAN BHAI

OWNER:-

*Signature*  
MANOJ L. KANANI  
B-2 NILAKANTH NAGAR SOCIETY,  
THAKKARNAGAR, AHMEDABAD.  
AUDA LIC/10/100/734

*Signature*  
KETAN K. PATEL  
'CELLAR' TRAMADIR APARTMENT,  
INDIA COLONY, AHMEDABAD.  
AUDA LIC/10/100/1188

ENGINEER:- STRU. ENGG.:-



समाप्तवाली जमीनचा मावळी वळ, जिस्सा, जें बसकामा  
अन्व